

# ***ELEVATOR PRODUCTS ENGINEERED AND BUILT FOR RELIABILITY***

**Engineered and Built for Critical Power Applications**



Your Trusted Partner in the Elevator Industry



**GRAND POWER**  
— SYSTEMS —

# CUSTOM TRANSFORMERS AND CHOKES FOR PEOPLE MOVING APPLICATIONS

## THREE PHASE DRIVE ISOLATION TRANSFORMER



### Standard Features

Primary Voltage Range 208-600VAC	200°C Insulation System (130°C rise)
Delta/Wye Configuration	Elevator Duty Rated
60 Hz Frequency	Stackable Heavy Duty Ventilated NEMA Type 1 Enclosure
(1) 5% FCAN and (1) 5% FCBN Voltage Tap	ANSI 61 Gray Color
3-6% Impedance	Aluminum Coil Designs

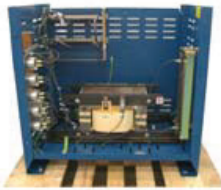
### Options

- ▶ Copper Windings
- ▶ 80°C rise or 115°C rise
- ▶ Input/Output Protection
- ▶ Sprinkler Proof Enclosure
- ▶ Custom Paint
- ▶ K Ratings of 9, 13 and 20 Available
- ▶ Electrostatic Shield
- ▶ Custom Enclosures Available
- ▶ 50 Hz Frequency
- ▶ Auxiliary Outputs Available

Ratings		
KVA Ratings*	H.P. Ratings	Enclosure (in inches)
11	7.5	34H x 26W x 24D
14	10	
20	15	
27	20	
34	25	
40	30	
51	40	34H x 36W x 24D
63	50	
75	60	
93	75	43H x 36W x 30D
118	100	
145	125	
175	150	
220	200	51H x 44W x 36D
275	250	
330	300	
440	400	
550	500	Special - Call Warner Power for Details

\*Other KVA Ratings Available

## DC FILTER AND CHOKE ASSEMBLY



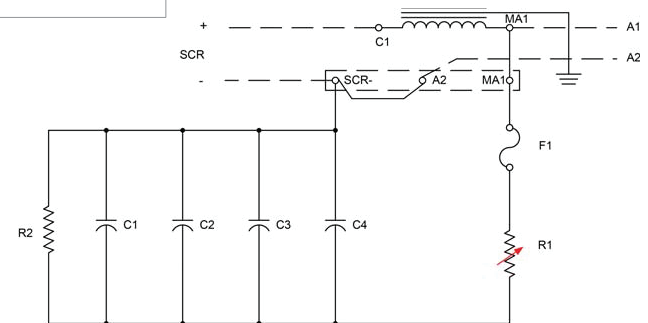
### Standard Features

5 mH Inductance Value	Elevator Duty Rated
Filter Board Assembly	Stackable Heavy Duty Ventilated NEMA Type 1 Enclosure
360 Hz Ripple Frequency	ANSI 61 Gray Color
180°C Insulation System (115°C rise)	Aluminum Coil Designs

### Options

- ▶ 2.5, 3, & 6 mH Inductance Values
- ▶ See Transformer Options

Current Rating	Height (inches)	Width (inches)	Depth (inches)
25	28.50	25.00	24.00
50/100/150/200/250/300	34.00	36.00	24.00
350/400	43.00	36.00	30.00
450	51.00	44.00	36.00



**GrandPowerSystems.com • Ph: (844) 383-8644**



Grand Haven, Michigan



Warner, NH