


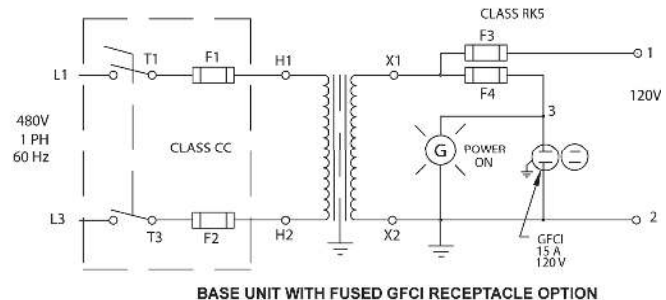
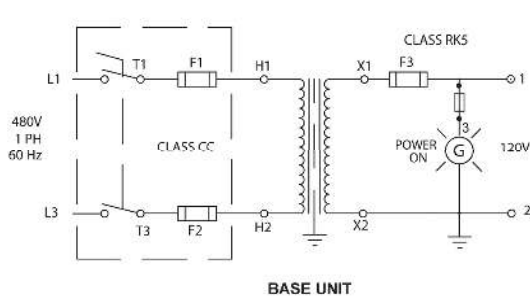
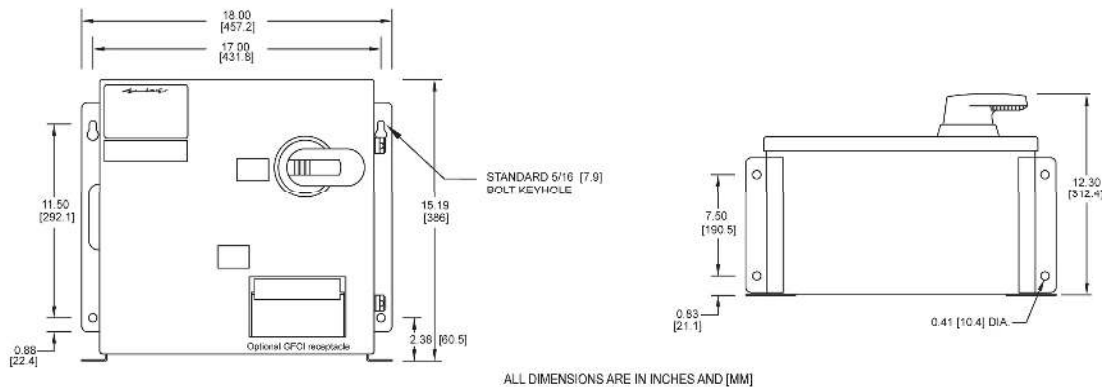
TRANSFORMER DISCONNECT - NEMA 12 / IP54 GNTB SERIES

GENERAL PURPOSE (5 KVA - 7.5 KVA)

The Daykin GNTB Series is a NEMA 12 / IP54 enclosed transformer disconnect with a large capacity machine tool transformer. Dual mounting capability offers flexibility.

Features

- 200 kA RMS short circuit current rating
- Lockable switch in the off position with primary integral CLASS CC fuses
- Secondary fuseholders only - suitable for CLASS RK5 fuses
- Electrostatically shielded transformer provides positive protection against short circuits from the primary to the secondary, as well as attenuating high frequency noise and transients
- Flange mounted lockable disconnect switch with visible blade construction
- Continuous hinged door with neoprene gasketing and enclosure seams continuously welded
- Power-on pilot light
- Two optional 15 Amp receptacles
- For control circuits only
-  Listed



| Transformer kVA Rating | Model | Fuse Rating/Amps | | Approx. Weight lb (kg) |
|------------------------|----------|------------------|------------------------|------------------------|
| | | Primary F1 & F2 | Max. Secondary F3 & F4 | |
| 5.0 | GNTB-5 | 20 | 60 | 125 (57) |
| 7.5 | GNTB-7.5 | 25 | 60 | 155 (70) |

Note: Secondary fuses are not provided

GrandPowerSystems.com • Ph: (844) 383-8644 • sales@daykin.com



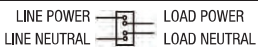




by



TRANSFORMER DISCONNECTS

OPTIONS AVAILABLE FOR TRANSFORMER DISCONNECTS

| General Options Available | Add Suffix |
|--|------------|
| Standard duplex receptacle (with fuseholder only)  | D |
| Secondary fuses provided | F |
| GFCI receptacle provided (with fuseholder only)  | G |
| GFCI breaker to protect entire load  | B |
| European “S hukō “ style receptacle 2P, 3W, 250V (with fuseholder only)  | M |
| Universal receptacle provided (with fuseholder only)  | R |
| No pilot light (pilot light is provided by default) | N |
| CE Certified | CE |
| 3 primary fuses provided (2 provided by default) | P |

| VOLTAGE OPTIONS | | | |
|-----------------|-----------------|-------|------------|
| Primary Volts | Secondary Volts | Hertz | Add Suffix |
| 240 | 120 | 60 | 240 |
| 380 | 115 | 50 | 380 |
| 400 | 115 | 50 | 400 |
| 415 | 115 | 50 | 415 |
| 600 | 120 | 60 | 600 |
| 380 | 220 | 50 | 3802 |
| 400 | 220 | 50 | 4002 |
| 415 | 220 | 50 | 4152 |
| 480 | 240 | 60 | 4801 |
| 480/380 | 120 | 50 | 431 |
| 480/380 | 220 | 50 | 432 |

Foot Notes:

- (1) For outputs greater than 20A, secondary fuseholder (supplied without fuse) must be added.
- (2) Options “D” and “G” are not available with these voltage combinations: must use options “M” or “R” if receptacle is required.
- (3) Cannot use standard receptacle on NEMA 12 enclosed units, due to potential outside installation; must use GFCI receptacle.
- (4) Options “D” and “G” may not be able to be installed in all units together.
- (5) More than 3 options, and certain combinations (“A” with 600VAC), will require a special part number. Please contact Customer Service to obtain part number for ordering purposes.
- (6) Units using a European “Shuko” or universal receptacle cannot be marked UL.

GrandPowerSystems.com • Ph: (844) 383-8644 • sales@daykin.com



by

